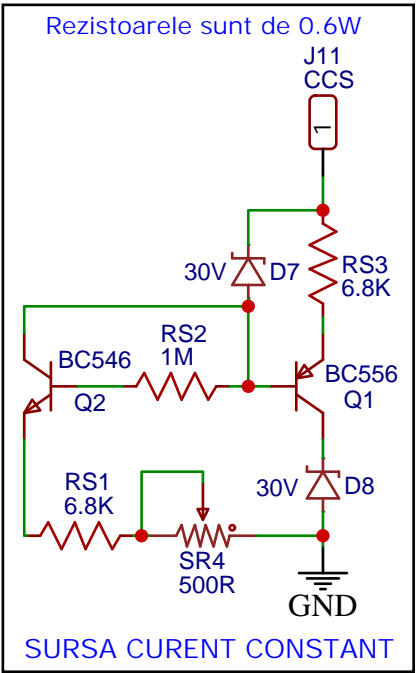
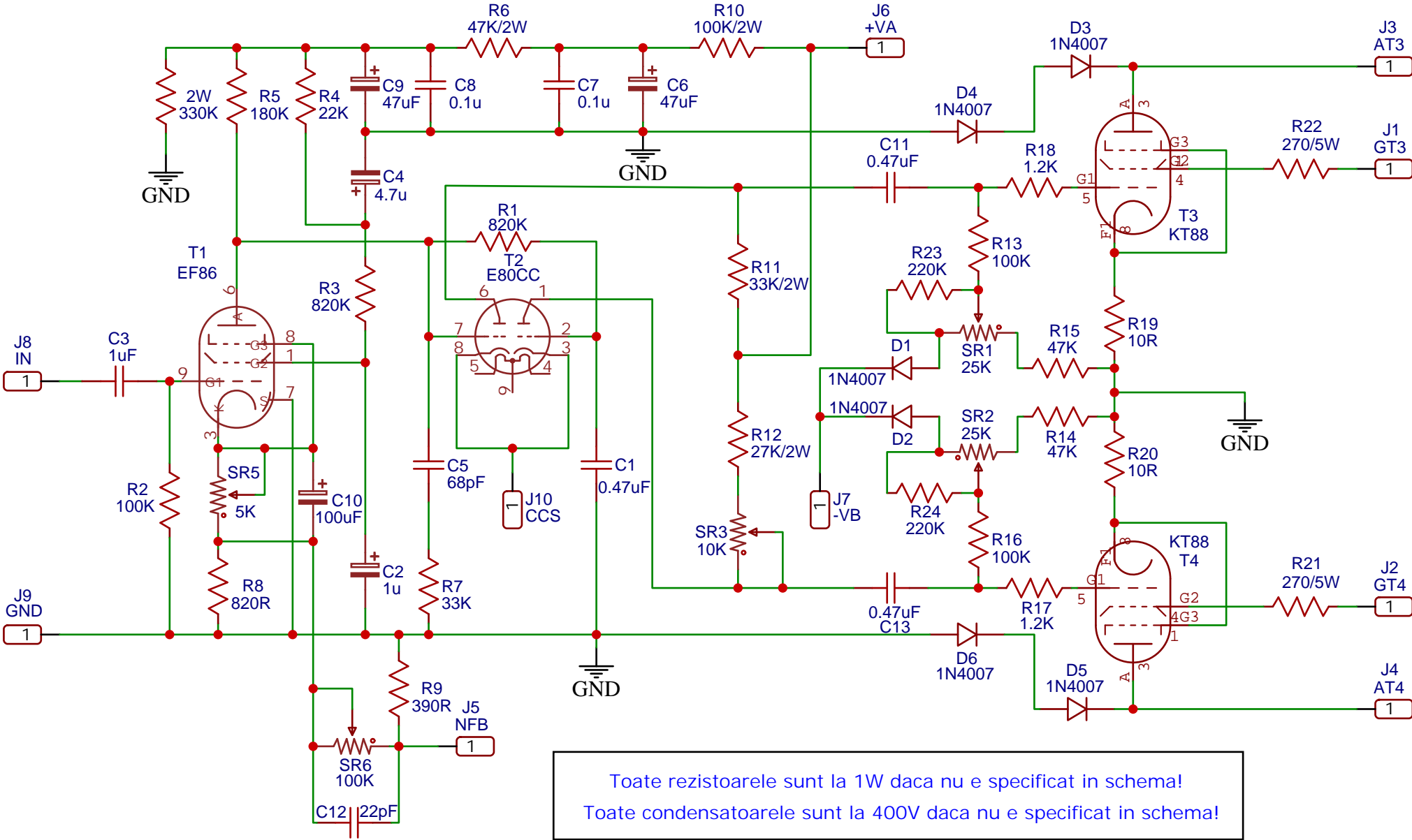


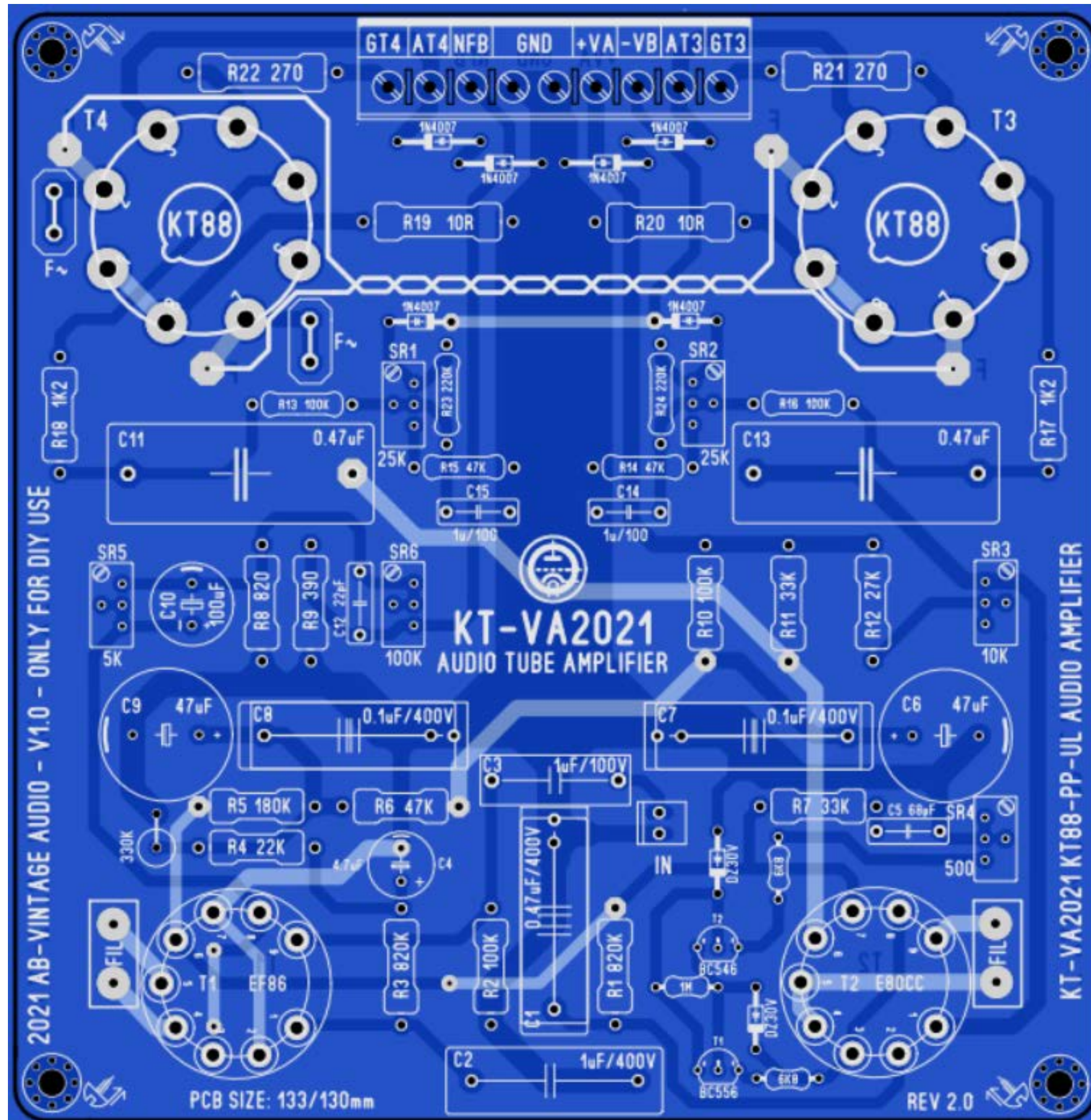
# Schema electronica a amplificatorului KT-VA2021



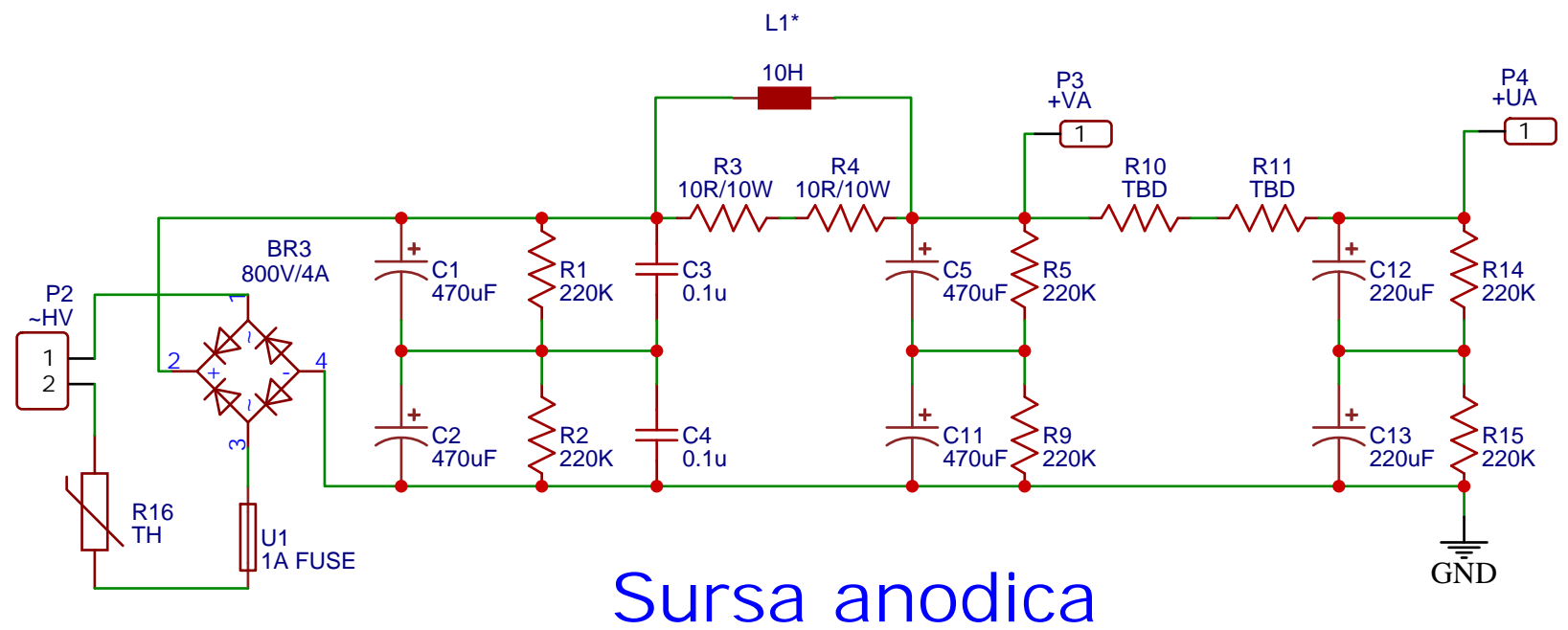
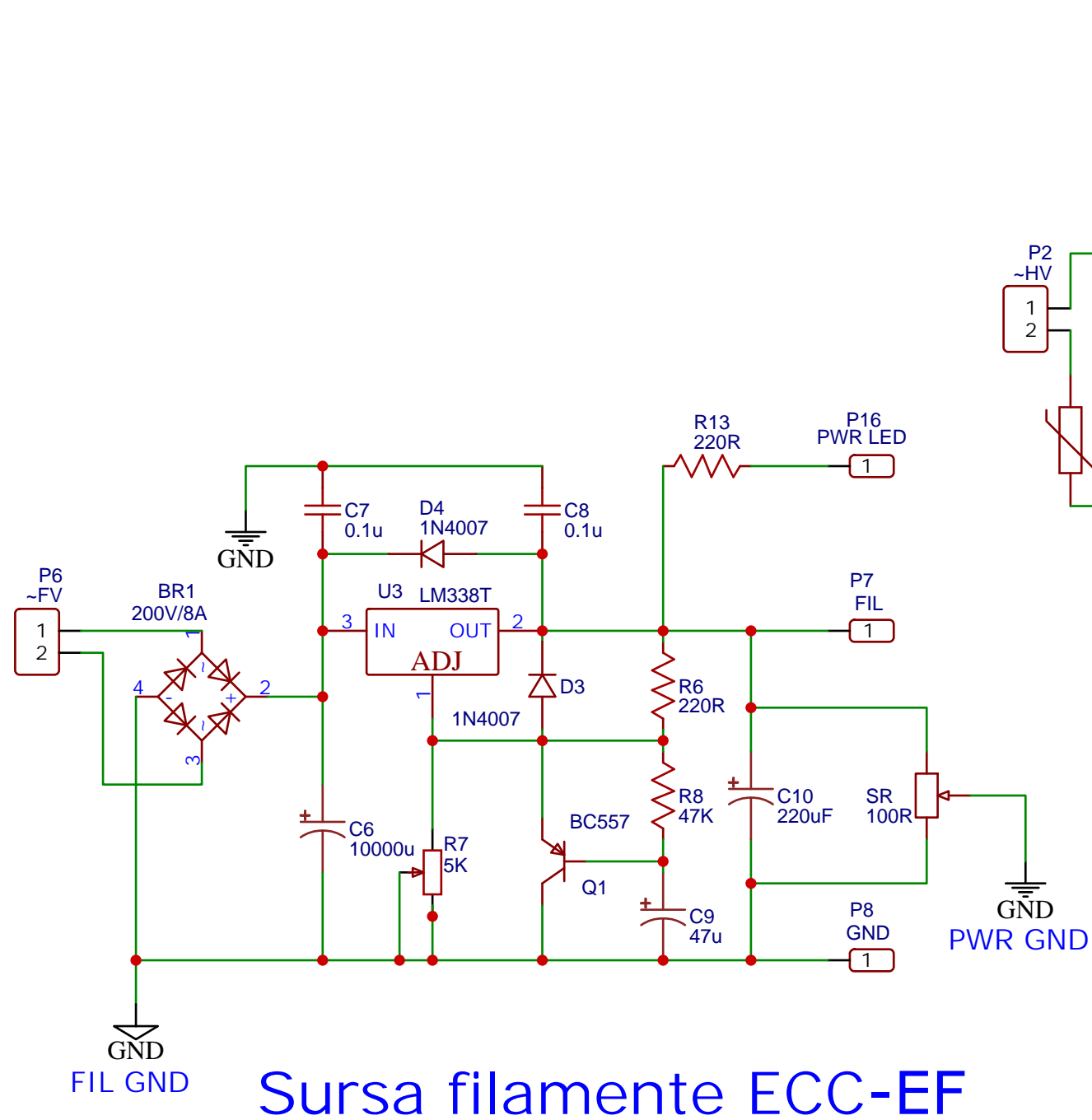
Toate rezistoarele sunt la 1W daca nu e specificat in schema!  
 Toate condensatoarele sunt la 400V daca nu e specificat in schema!

TITLE: KT-VA2021 PP AMP SCHEMATIC		REV: 2.0
	Company: AB VINTAGE AUDIO	Sheet: 1/1
	Date: 2022-01-04	Drawn By: Adrian Biruescu

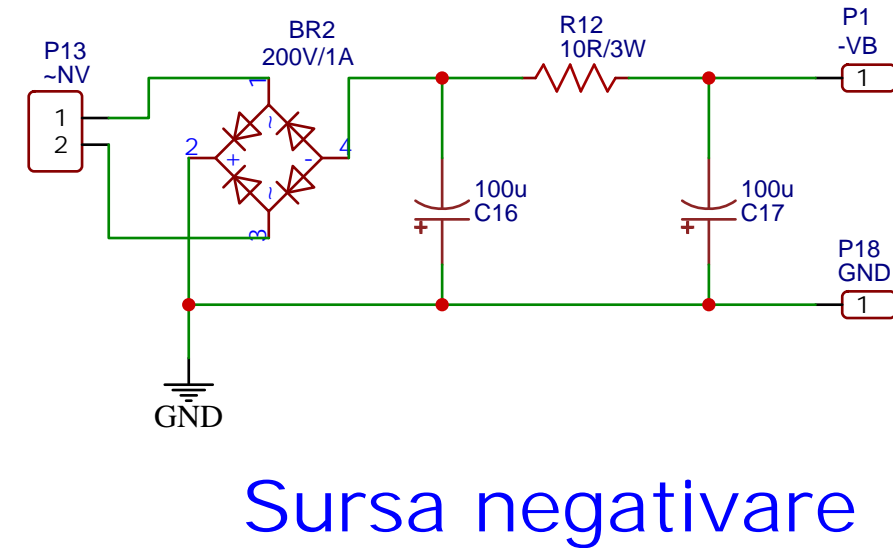
Layout-ul cablajului pentru amplificator, vedere de sus



# Schema sursei de alimentare pentru amplificatorul KT-VA2021

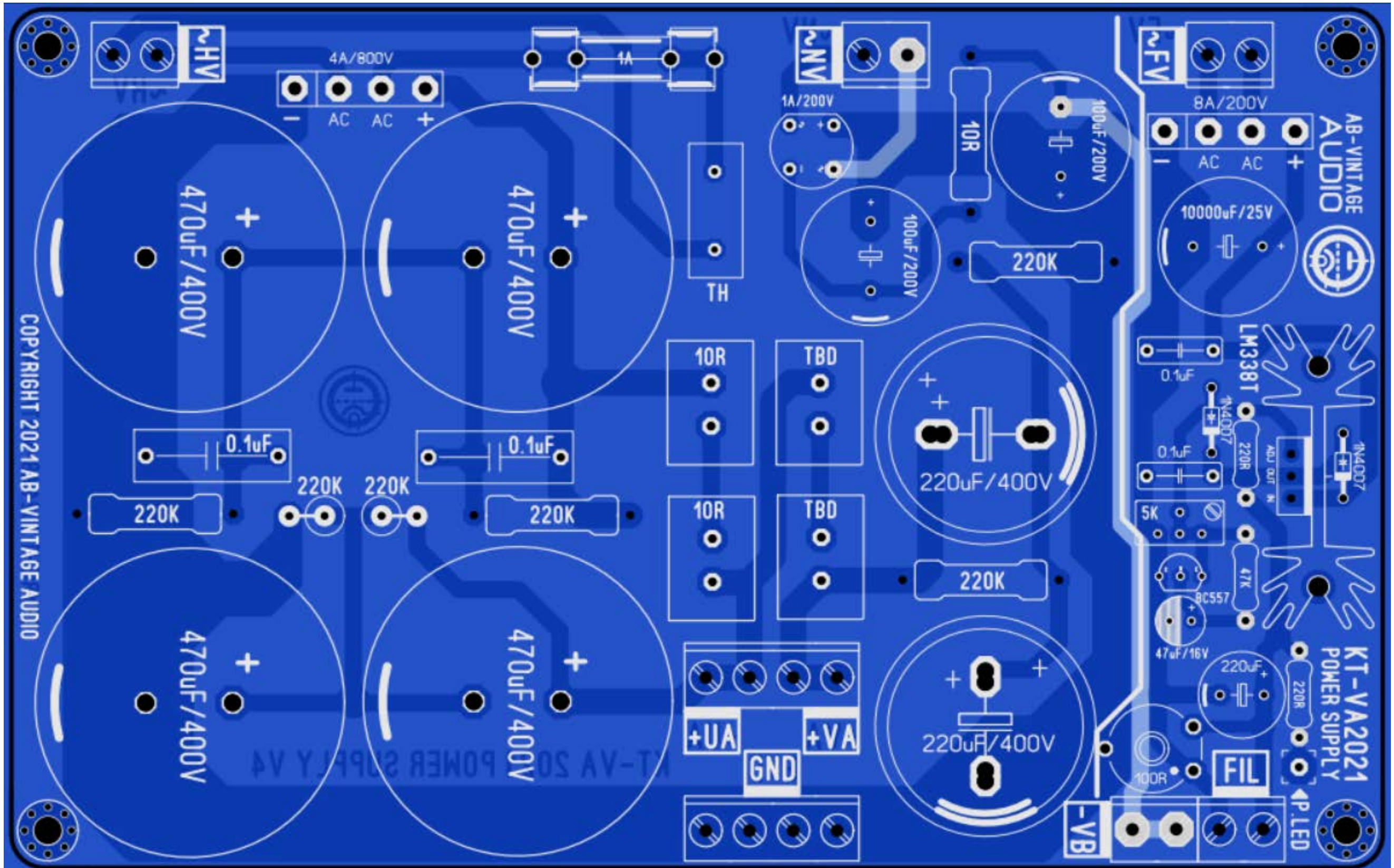


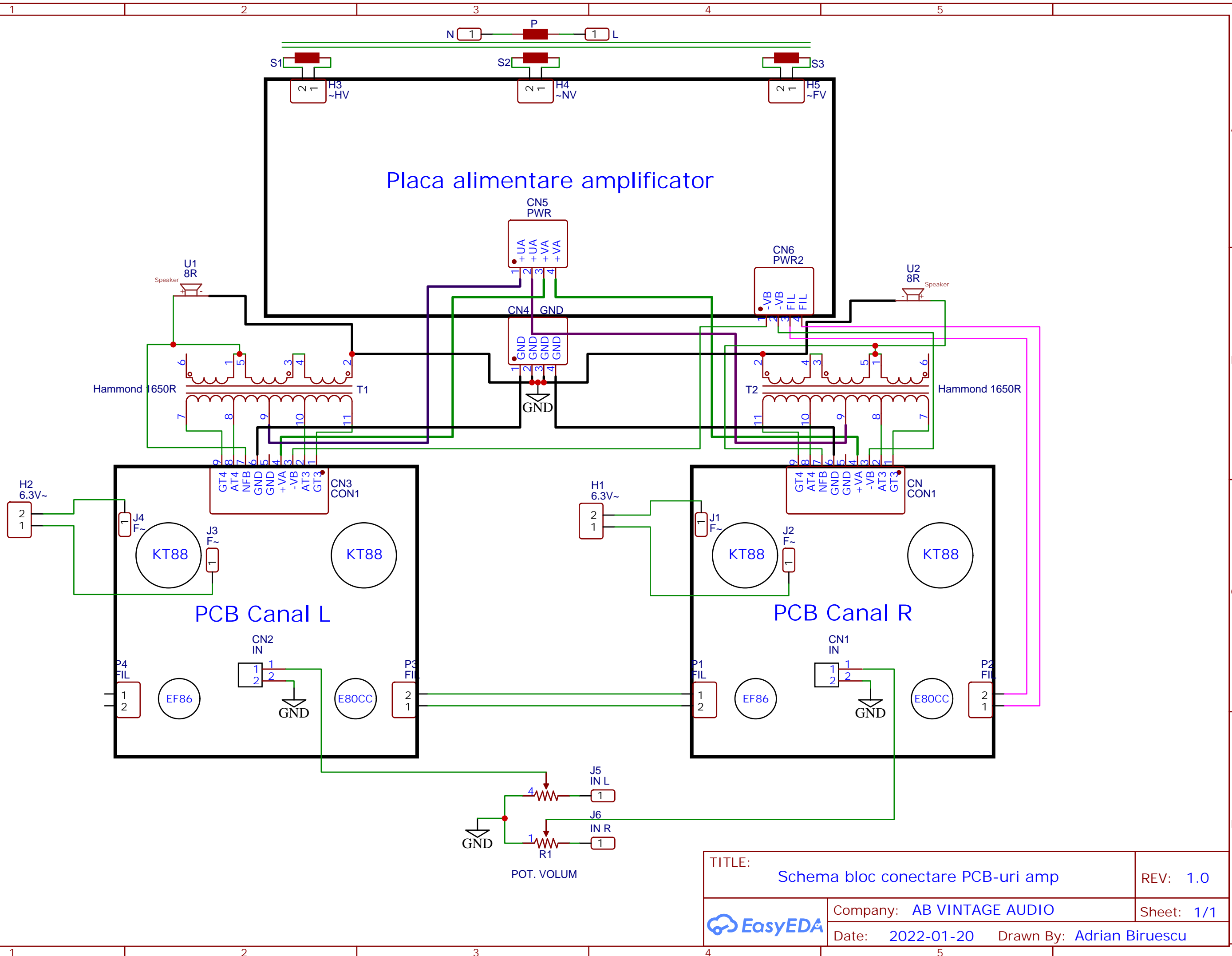
\*Se poate face strap, se pot folosi rezistoare de valori mici sau un drosel de max 10H



TITLE: Sursa Amplificator KT-VA2021		REV: 2.0
EasyEDA	Company: AB VINTAGE AUDIO	Sheet: 1/1
	Date: 2022-01-10	Drawn By: Adrian Biruescu

Layout sursa de alimentare, vedere de sus





TITLE: Schema bloc conectare PCB-uri amp		REV: 1.0
EasyEDA	Company: AB VINTAGE AUDIO	Sheet: 1/1
	Date: 2022-01-20	Drawn By: Adrian Biruescu

# Lista componente amplificator

ID	Name	Designator	Quantity	TME Part	Manufacturer
1	330K	2W	1	PR02-330K	VISHAY
2	0.47uF	C1	1	MKP4-470N/400	WIMA
3	0.47uF	C11,C13	3	MKP10-470N/400	WIMA
4	1uF/400V	C2	1	MPEM-1U/400	SR PASSIVES
5	1uF/250V	C3	1	B32522N3105J000	EPCOS
6	4.7u/400V	C4	1	RD2G475M1012MBB	SAMWHA
7	68pF	C5	1	FKP2-47P/1000-R	WIMA
8	47uF	C6,C9	2	UCS2W470MHD	NICHICON
9	0.1u	C7,C8	2	MKP10-100N/630	WIMA
10	100uF	C10	1	URZ1H101MPD1TD	NICHICON
11	22pF	C12	1	N/A	WIMA
12	1N4007	D1,D2,D3,D4,D5,D6	6	1N4007-13-DIO	DIOTEC
13	30V	D7,D8	2	NTE5084A	NTE ELECTRONICS
14	Conector	J1-J7	3	DG300-5.0-02P13	DEGSON
15	BC556	Q1	1	BC556BTA	ON Semicon
16	BC546	Q2	1	BC546BTA	ON Semicon
17	820K	R1,R3	2	MOF1WS-820K	SR PASSIVES
18	100K	R2,R13,R16	3	1W-100K-1%	ROYAL OHM
19	22K	R4	1	PR02-22K	VISHAY
20	180K	R5	1	PR02-180K	VISHAY
21	47K/2W	R6	1	2W-47K-1%	ROYAL OHM
22	33K	R7	1	1W-33K-1%	ROYAL OHM
23	820R	R8	1	1W-820R-1%	ROYAL OHM
24	390R	R9	1	1W-390R-1%	ROYAL OHM
25	100K/2W	R10	1	PR02-100K	VISHAY
26	33K/2W	R11	1	2W-33K-1%	ROYAL OHM
27	27K/2W	R12	1	PR02-27K	VISHAY
28	47K	R14,R15	2	PR01-47K	VISHAY
29	1.2K	R17,R18	2	PR01-1K2	VISHAY
30	10R	R19,R20	2	PMR2S-10R	ROYAL OHM
31	270/5W	R21,R22	2	KNP05WS-270R	ROYAL OHM
32	220K	R23,R24	2	1W-220K-1%	ROYAL OHM
33	6.8K	RS1,RS3	2	MBB02070C6801FCT00	ROYAL OHM
34	1M	RS2	1	MBB02070C1004FCT00	ROYAL OHM
35	25K	SR1,SR2	2	T93YA50K	VISHAY
36	10K	SR3	1	64Y10K	VISHAY
37	500R	SR4	1	T93YB500R	VISHAY
38	5K	SR5	1	64Y5K	VISHAY
39	100K	SR6	1	64Y100K	VISHAY
40	EF86	T1	1	N/A	EF86 Tesla, Philips, etc
41	E80CC	T2	1	N/A	E80CC Philips, Tungstram, etc
42	KT88	T3,T4	2	N/A	KT88EH, Mullard, Gold Lion

# Lista componente sursa

ID	Name	Quantity	TME Part	Manufacturer
1	400V/4A	1	GBU10D	DC COMP.
2	200V/1A	1	2W02G-E4/51	Vishay
3	800V/4A	1	GBU4K	DC COMP.
4	470uF	4	LGR2G471MELC50	Nichicon
5	0.1u	2	MKS4-100N/630	WIMA
6	10000u	1	UVZ1E103MRD	Nichicon
7	0.1u	2	MKS4-100N/100	WIMA
8	47u	1	UVZ1E470MDD	Nichicon
9	220uF	1	UVY1V221MPD1TD	Nichicon
10	220uF	2	UPH2G221MHD	Nichicon
11	100u	2	UCY2D101MHD3TN	Nichicon
12	1N4007	1	1N4007-13-DIO	DIOTEC
13	1N4007	1	1N4007-13-DIO	DIOTEC
14	-VB	1	DG300-5.0-2P11	Degson
15	~HV	1	DG300-5.0-2P11	Degson
16	+VA	1	DG300-5.0-2P11	Degson
17	+UA	1	DG300-5.0-2P11	Degson
18	~FV	1	DG300-5.0-2P11	Degson
19	+FIL	1	DG300-5.0-2P11	Degson
20	GND	2	DG300-5.0-2P11	Degson
21	~LV	1	DG300-5.0-2P11	Degson
22	PWR LED	1	NA	NA
23	BC557	1	BC557B-DIO	DIOTEC
24	220K	6	3W-220K	Royal Ohm
25	47R/10W	2	AX10WV-47R	Royal Ohm
26	220R	2	MRS25000C2200FCT00	Vishay
27	5K	1	3292W-1-502LF	Bourns
28	47K	1	MRS25000C4702FCT00	Vishay
29	TBD	2	AX5WV-4K7*	Royal Ohm
30	10R/3W	1	3W-10R	Royal Ohm
31	TH	1	B57237S0220M	Epcos
32	100R	1	CA9V-100R	ACP
33	1A FUSE	1	ZHL12	PROFFUSE
34	LM338T	1	LM338T/NOPB	Texas Instruments